

BORN TO CUT

SIMONDS[®]

TABLE OF CONTENTS

SIMONDS

GENERAL INFORMATIONS

<i>Troubleshooting.....03</i>	<i>Customer Industries.....07</i>	<i>Break-In.....30</i>
<i>History of Simonds.....04 - 05</i>	<i>Tooth Pitch Selection.....08 - 09</i>	<i>Support.....31</i>
<i>Material Reference Chart.....06</i>	<i>SHIELD®19</i>	

BI-METAL BANDSAW BLADE

<i>Epic GP.....10</i>	<i>SiClone.....14</i>	<i>SiClone XP GT.....18</i>
<i>SBX GP.....11</i>	<i>SiClone GT.....15</i>	FOR WOOD
<i>Endurance.....12</i>	<i>XP.....16</i>	<i>Palletbuster.....28</i>
<i>SBX ONE.....13</i>	<i>SiClone XP.....17</i>	<i>RS Pro.....29</i>

CARBIDE BANDSAW BLADE

<i>Triple Chip.....20</i>	<i>TA-Set.....23</i>	<i>Buster.....26</i>
<i>Vantage.....21</i>	<i>Alublaster.....24</i>	<i>Simogrit I/C.....27</i>
<i>Set Tooth.....22</i>	<i>Breaker.....25</i>	

TROUBLESHOOTING

SIMONDS

STRIPPING TEETH

- *too many teeth or too few teeth in the cut*
- *parts not held securely - use a third clamp or weld ends*
- *feed rate too high or speed too slow*
- *poor butt weld*
- *chip brush not working, causing chips to overload gullets*
- *check coolant concentration*



BAND BREAKAGE

- *worn guides*
- *guide arms set too far apart*
- *diameter of wheels too small - use thinner bands*
- *band tension too high*
- *feed rate too high*
- *poor butt weld*



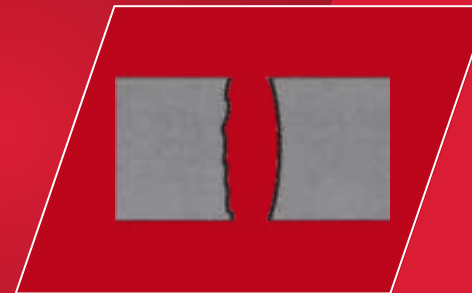
PREMATURE DULLING OF TEETH

- *improper break-in*
- *check coolant concentration and flow*
- *check chip brush*
- *check feed rates and blade speed*
- *select proper tooth pitch*



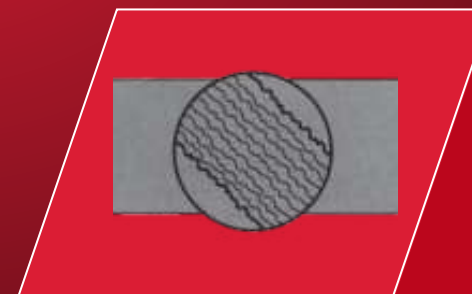
CROOKED CUT

- *dull blade*
- *improper break-in*
- *guide arms too far apart or out of alignment*
- *damaged roller or carbide guides*
- *feed rate too heavy or blade speed too slow*
- *tooth pitch too fine*
- *band tension too low*
- *vise clamp out of square*



ROUGH CUT

- *band speed too slow and feed rate too high*
- *improper break-in*
- *dull or damaged teeth*
- *check chip brush*
- *poor butt weld*



HISTORY OF

SIMONDS®

1832

Abel Simonds opens a small scythe-making shop along the banks of the Nashua River in West Fitchburg – the company operates under the name J.T. Farwell & Company. Original product range includes cutting tools used around the farm.



1841

The young company is awarded its first patent in 1841, #2379, for scythe blades.



Abel Simonds buys out J. T. Farwell and renames the company A. Simonds & Son.

1851



As the agricultural market base moves further west, the mower blade and reaper business is sold off in 1878. Simonds begins manufacturing circular saw blades and wide bandsaws that same year.

1878

1868

Having outgrown the initial premises, in 1868 the company is incorporated as Simonds Mfg. Co., and moves to a new building in downtown Fitchburg.



To reduce our dependence on foreign steel, a steel mill is added in Chicago in 1900. Later on it will be replaced by a large one in Lockport, NY.

1893



1915

Simonds became the largest saw manufacturer in the world! A third site, on North Street in downtown Fitchburg, is a sprawling complex.



1879

Simonds develops an entirely new method of manufacturing saws - the Crescent Ground process – achieving results far superior to any saws made before. This is the first of many Simonds product innovations.

1923

The companies name changed to the Simonds Saw & Steel Company, to better reflect the focus.



2014

The german facility expands the factory floor space by 70% to keep up with the production.



2019

New tooth grinding technology is installed in Germany while in Louisville the facility get expand by 30% and installed Carbide manufacturing production.

2001

Nicholson bandsaw blade division of Cooper-Tools is purchased, bringing together two storied saw-making traditions.

1931

A new production plant was build. The world's first windowless plant, featuring straight – line production all on one level. Raw material comes in the back, flows through the plant and leaves the front as finished product.



2004

Simonds brings a new innovation to the light, The Sinewave technology get introduced.



1992

Simonds acquires a german bandsaw manufacturer, increasing the European market share.

Simonds develops the first carbide tipped bandsaw blade in 1963, based on our carbide tipped circular saw innovations.

1963



MATERIAL REFERENCE CHART

SIMONDS

MATERIALS

Wood/
Plastic Structural
& Beams Aluminium/
Non-Ferrous Carbon
Steels Low
Alloy Steels Medium
Alloy Steels Mold & High
Alloy Steels Tools &
Die Steels Stainless
Steel Titanium &
Titanium Alloys Nickel
Basic Alloys Induction
Hardened

Epic GP

SBX GP

SBX ONE

Endurance

SiClone

SiClone GT

XP

SiClone XP

SiClone XP GT

Set Tooth

Triple Chip

Vantage

Alublaster

TA-Set

RS Pro

Palletbuster

Buster

Breaker

Simogrit I/C

CUSTOMER INDUSTRIES

SIMONDS



TOOTH PITCH SELECTION

SIMONDS

OPTIMIZING TOOTH PITCH

Always strive for a minimum of 3 teeth and a maximum of 20 teeth in the cut.

6-12 teeth in the cut at any time is the optimum.

AVERAGING VARIABLE PITCH TEETH

PITCH	-	AVERAGE NUM OF TEETH
3/4 TPI	-	3 1/2 TPI
5/8 TPI	-	6 1/2 TPI
6/10 TPI	-	10 TPI

EXAMPLE

4" bar stock - using a 3/4 TPI blade

(Average TPI = $3+4:2=3,5$) | Would mean bar stock size (4) x by the average TPI (3,5) = Teeth in the cut (14)

2/3 TPI - 10 teeth in the cut - perfect amount - best cutting rates

4/6 TPI - 20 teeth in the cut - limit of teeth - still performing ok

5/8 TPI - 26 teeth in the cut - too many teeth - low in performance

FURTHER INFLUENCE FACTORS OF PITCH SELECTION

MATERIAL SHAPE

Complex shapes can easily strip teeth.

It is best to use a blade with less face rake angle when cutting structurals and other complex profile shapes.

CHIP FORMATION

Hard materials require a small, strong tooth shape.

Soft materials require larger gullets due to the large chip load.

CHIP LENGTH

The longer the tooth is in a cut, the more chip that will be generated which has to be departed.

Cutting stops when gullets are full and the blade get cracks due chip load.

TOOTH PITCH SELECTION

SIMONDS

EpicGP | SiClone | XP | SiCloneXP

CARBIDE

Cross section	5/8	4/6	3/4	2/3	1.4/2	1.1/1.4	0.7/0.9	3	3/4	2/3	1.9/2.1	1.4/1.8
1"												
2"												
4"												
6"												
8"												
10"												
12"												
16"												
20"												
24"												
30"												
36" +												

EpicGP | Endurance

SBX

Tube wall	10/14	8/12	6/10	5/8	5/7	4/6	3/4	2/3	12/16	8/11	6/9	5/7	4/6	3/4	2/3
1 / 16"															
1 / 8"															
1 / 4"															
1 / 2"															
3 / 4"															
1"															
1 1 / 2"															
2"															
Beam width												4/6	3/4	2/3	
< 6"															
6" - 8"															
8" - 12"															
12" +															

BI-METAL /// BANDSAW BLADE

SIMONDS

EpicGP



Tube



Tube



Solid



Solid

APPLICATIONS GROUPS

- Carbon Steels
- Low Alloy Steels
- Medium Alloy Steels
- Cr. Mo.

ADVANTAGES

- Long lasting M42 high speed edge improves wear resistance
- Conventional tooth geometry

SIMONDS EPIC GP

inch	mm	Teeth per inch														
		14	10/14	8/12	6/10	6	5/8	4/6	4	3/4	2/3	1.4/2	1.25	1.1/1.4	0.75/1.25	
1/4"x 035	6 x 0.90					■										
3/8 "x 035	10 x 0.90					■										
1/2"x 025	13 x 0.65	■	■	■	■					■						
1/2"x 035	13 x 0.90	■	■	■	■					■						
3/4"x 035	20 x 0.90	■	■	■	■		■	■								
1"x 035	27 x 0.90	■	■	■	■		■	■		■	■			■		
1 1/4"x 042	34 x 1.10						■	■		■	■	■	■			
1 1/2"x 050	41 x 1.30						■	■		■	■	■	■			
2"x 063	54 x 1.60								■	■	■	■		■	■	
2 5/8"x 063	67 x 1.60								■	■	■	■		■	■	
3 1/8"x 063	80 x 1.60														■	
Dimension	inch	< 1/16"	< 1/8"	< 1/4"	< 1/2"	< 1"	< 1"	< 2"	< 2"	3"- 8"	5"- 16"	9"- 24"	12"- 31"	16"- 31"	22"- 47"	
Dimension	mm	2-25	5-25	10-40	20-60	50-80	40-80	50-150	80-120	80-200	130-400	220-600	300-800	400-800	550-1200	

BORN TO CUT

BI-METAL /// BANDSAW BLADE

SBX GP

SIMONDS



Tube

Tube

Solid

Solid

Tubes



APPLICATIONS GROUPS

- Carbon Steels
- Structural Steels

ADVANTAGES

- Robust tooth improves resistance to shock for all-purpose applications
- Wide range of tooth pitches for multiple applications

inch	mm	Teeth per inch							
		12/16	8/11	6/9	5/7	4/6	3/4	2/3	
3/4"x 035	20 x 0.90	■	■	■	■	■	■		
1"x 035	27 x 0.90	■	■	■	■	■	■	■	
1 1/4"x 042	34 x 1.10		■	■	■	■	■	■	
Dimension	inch	< 1 1/16"	< 1/4"	< 1/2"	< 1"	< 2"	3"-8"	5"-16"	
Dimension	mm	2-20	15-40	20-70	40-90	50-150	80-200	130-400	

BI-METAL /// BANDSAW BLADE

SIMONDS

Endurance



Tube



Tube



Solid



Tubes



APPLICATIONS GROUPS

- Carbon Steels
- Structural Steels
- Low Alloy Steels
- Medium Alloy Steels/
Cr. Mo.



ADVANTAGES

- M42 high speed edge improves wear resistance in all-purpose applications
- Special tooth geometry for small bars and medium/ bold structural shapes

inch	mm	Teeth per inch			
		5/7	4/6	3/4	2/3
1"x 035	27 x 0.90	■	■	■	■
1 1/4"x 042	34 x 1.10	■	■	■	■
1 1/2"x 050	41 x 1.30		■	■	■
2"x 063	54 x 1.60			■	■
Dimension	inch	< 1"	< 2"	3"-8"	5"-16"
Dimension	mm	40-90	50-150	80-200	130-400

BORN TO CUT

SBX ONE



BI-METAL /// BANDSAW BLADE

SIMONDS®



SIMONDS® SBX ONE

APPLICATIONS GROUPS

- *Structural Steels*

ADVANTAGES

- *Robust tooth design improves resistance to shock in beam cutting*
- *Extra heavy set prevents pinching*

inch	mm	Teeth per inch		
		4/6	3/4	2/3
1 1/2"x 050	41 x 1.30	■ ■	■ ■	■ ■
2"x 063	54 x 1.60	■ ■	■ ■	■ ■
2 5/8"x 063	67 x 1.60		■ ■	■ ■
3 1/8"x 063	80 x 1.60		■ ■	■ ■
Dimension	inch	< 2"	3"-8"	5"-16"
Dimension	mm	50-150	80-200	130-400

■ Coated Tooth Version

BI-METAL BANDSAW BLADE

SIMONDS

SiCclone



APPLICATIONS GROUPS

- High Alloy Steels
- Stainless Steels
- Nickel Based Alloys
- Titanium & Titanium Alloys



ADVANTAGES

- Special tooth geometry to increase penetration and reduce work hardening
- Variable set to increase productivity

inch	mm	Teeth per inch						
		4/6	3/4	2/3	1.4/2	1.1/1.4	0.7/0.9	
1"x 035	27 x 0.90	■	■	■				
1 1/4"x 042	34 x 1.10	■	■	■				
1 1/2"x 050	41 x 1.30	■	■	■ ■	■ ■			
2"x 050	54 x 1.30	■	■	■	■			
2"x 063	54 x 1.60		■	■ ■	■ ■	■ ■		
2 5/8"x 063	67 x 1.60				■ ■	■ ■	■ ■	
3 1/8"x 063	80 x 1.60					■ ■	■ ■	

Dimension	inch	< 2"	3"- 8"	5"- 16"	9"- 24"	16"- 31"	31"- 83"
Dimension	mm	50-150	80-200	130-400	220-600	400-800	800-2100

■ Coated Tooth Version

BORN TO CUT

BI-METAL BANDSAW BLADE

SiCcloneGT

SIMONDS



Solid



Solid



APPLICATIONS GROUPS

- High Alloy Steels
- Stainless Steels
- Nickel Based Alloys
- Titanium & Titanium Alloys

ADVANTAGES

- Special ground tooth for the best rake angle definition, better chip floss and decrease of cutting forces
- Variable set to increase productivity

inch	mm	Teeth per inch				
		3/4	2/3	1.4/2	1.1/1.4	0.7/0.9
1 1/4"x 042	34 x 1.10	■	■			
1 1/2"x 050	41 x 1.30	■	■	■		
2"x 063	54 x 1.60		■	■	■	
2 5/8"x 063	67 x 1.60			■	■	■
3 1/8"x 063	80 x 1.60				■	■
Dimension	inch	3"- 8"	5"- 16"	9"- 24"	16"- 31"	31"- 83"
Dimension	mm	80-200	130-400	220-600	400-800	800-2100

BORN TO CUT

BI-METAL /// BANDSAW BLADE

SIMONDS

XP



Solid

Solid

PM M51

APPLICATIONS GROUPS

- High Alloy Steels
- Tool and Die Steels
- Stainless Steels

ADVANTAGES

- Longer blade life as M42
- Higher resistance to heat generation
- Conventional tooth geometry

SIMONDS XP

	inch	mm	Teeth per inch						
			8/12	6/10	5/8	4/6	3/4	2/3	1.4/2
1"x 035	27 x 0.90		■	■	■	■	■	■	
1 1/4"x 042	34 x 1.10					■	■	■	
1 1/2"x 050	41 x 1.30					■	■	■	■
Dimension	inch		< 1/4"	< 1/2"	< 1"	< 2"	3"- 8"	5"- 16"	9"- 24"
Dimension	mm		10-40	20-60	40-80	50-150	80-200	130-400	220-600

BORN TO CUT

BI-METAL BANDSAW BLADE

SiCcloneXP



SIMONDS



PM M51

SIMONDS SICLONE XP

APPLICATIONS GROUPS

- High Alloy Steels
- Stainless Steels
- Nickel Based Alloys
- Titanium & Titanium Alloys

ADVANTAGES

- Longer blade life as M42
- Higher resistance to heat generation
- Variable set to increase productivity

inch	mm	Teeth per inch						
		4/6	3/4	2/3	1.4/2	1.1/1.4	0.7/0.9	
1"x 035	27 x 0.90	■	■					
1 1/4"x 042	34 x 1.10	■	■	■				
1 1/2"x 050	41 x 1.30	■	■	■	■			
2"x 063	54 x 1.60		■	■	■	■		
2 5/8"x 063	67 x 1.60				■	■	■	
3 1/8"x 063	80 x 1.60					■	■	

Dimension	inch	< 2"	3"- 8"	5"- 16"	9"- 24"	16"- 31"	31"- 83"
Dimension	mm	50-150	80-200	130-400	220-600	400-800	800-2100

BORN TO CUT

BI-METAL BANDSAW BLADE

SIMONDS

SiCclone XP GT



Solid

Solid

PM M51

APPLICATIONS GROUPS

- High Alloy Steels
- Stainless Steels
- Nickel Based Alloys
- Titanium & Titanium Alloys

ADVANTAGES

- Special ground tooth geometry to increase penetration and reduce work hardening
- Variable set to increase productivity



	inch	mm	Teeth per inch			
			2/3	1.4/2	1.1/1.4	0.7/0.9
1 1/2"x 050		41 x 1.30	■	■		
2"x 062		54 x 1.60		■	■	
2 5/8"x 062		67 x 1.60		■	■	■
3 1/8"x 062		80 x 1.60			■	■
Dimension	inch		5"- 16"	9"- 24"	16"- 31"	31"- 83"
Dimension	mm		130-400	220-600	400-800	800-2100

BORN TO CUT

SHIELD[®]

THE SPECIAL PVD MULTILAYER COATING



SIMONDS[®]

ADVANTAGES

- *Better Chip Flow*
- *Higher Cutting Rates (increased feed and speed)*
- *Increases Blade Life*
- *Higher Cutting Flexibility In Different Materials*

SHIELD[®]

provides an additional protection on the tooth edge which extend the blade life time and guarantees a smooth run to optimize the cutting performance bandsaw blade.

SHIELD[®]

can be applied on all bi-metal and carbide tipped bandsaw blades from 1" to 3 1/8".



**GET
IN
TOUCH**

CARBIDE /// BANDSAW BLADE

SIMONDS



Triple Chip



Flat Tube Tube Solid Solid

APPLICATIONS GROUPS

- Medium Alloy Steels
- Cr. Mo.
- Nickel Based Alloys
- High Nickel Alloys
- Exotic Metals

ADVANTAGES

- Triple Chip geometry provides a smooth surface finish
- Positive rake angle allows faster penetration for high production cutting



	inch	mm	Teeth per inch				
			3	3/4	2/3	1.9/2.1	1.4/1.8
3/4"x 035		20 x 0.90	■	■			
1"x 035		27 x 0.90	■	■			
1 1/4"x 042		34 x 1.10		■	■	■	
1 1/2"x 050		41 x 1.30		■	■	■	■
2"x 063		54 x 1.60		■	■	■	■
2 5/8"x 063		67 x 1.60			■		■
Dimension	inch		4"- 6"	2"- 6"	4"- 12"	10"- 12"	12"- 31"
Dimension	mm		120-200	80-200	130-400	220-600	400-800

BORN TO CUT

CARBIDE BANDSAW BLADE

Vantage



Solid



Solid



SIMONDS



APPLICATIONS GROUPS

- Medium Alloy Steels
- Cr. Mo.
- High Alloy Steels
- Tool and Die Steels
- Stainless Steels

ADVANTAGES

- Multi-chip design provides higher penetration for faster cutting rates
- Gullet design provides a better chip flow

inch	mm	Teeth per inch							
		3/4	2/3	1.9/2.1	1.4/1.8	1.1/1.4	0.9/1.1		
1"x 035	27 x 0.90	■							
1 1/4"x 042	34 x 1.10	■	■						
1 1/2"x 050	41 x 1.30	■	■		■				
2"x 050	54 x 1.30	■	■		■				
2"x 062	54 x 1.60	■	■	■	■	■		■	■
2 5/8"x 062	67 x 1.60			■	■	■		■	■
3 1/8"x 062	80 x 1.60					■			
Dimension	inch	3"- 8"	5"- 16"	12"- 20"	15"- 25"	25"- 30"	30"- 60"		
Dimension	mm	80-200	130-400	300-500	400-600	600-800	800-1500		

CARBIDE /// BANDSAW BLADE

SIMONDS



Set Tooth



Tube

Tube

Solid

Solid

APPLICATIONS GROUPS

- *Alumium*
- *Bronze*
- *Carbon Fiber*
- *Graphite*



ADVANTAGES

- *Three chips pattern with raker ensures straighter cuts*
- *Designed for both manual and automatic bandsaws*

inch	mm	Teeth per inch	
		3	2/3
3/4"x 035	20 x 0.90	■	
1"x 035	27 x 0.90	■	■
1 1/4"x 042	34 x 1.10	■	
Dimension	inch	5"- 8"	5"- 16"
Dimension	mm	120-200	130-400

BORN TO CUT

TA-Set



CARBIDE BANDSAW BLADE

SIMONDS



APPLICATIONS GROUPS

- Aluminium
- Bronze
- Titanium
- Titanium Alloys

ADVANTAGES

- High tensile carbide tips to resist abrasive wear
- Multi-chip design provides faster cutting rates
- Special set design to avoid clamping

inch	mm	Teeth per inch				
		2/3	1.4/1.8	1.1/1.4	0.9/1.1	0.7/0.9
1 1/4" x 042	34 x 1.10	■				
1 1/2" x 050	41 x 1.30	■	■			
2" x 050	54 x 1.30	■	■			
2" x 062	54 x 1.60	■	■			
2 5/8" x 062	67 x 1.60		■	■	■	
3 1/8" x 062	80 x 1.60			■	■	■
Dimension	inch	5"- 16"	16"- 24"	24"- 31"	31"- 59"	59"- 83"
Dimension	mm	130-400	400-600	600-800	800-1500	1500-2100

BORN TO CUT

CARBIDE BANDSAW BLADE

SIMONDS

Alublaster

Solid

Solid

APPLICATIONS GROUPS

- Aluminium
- Bronze
- Copper

SIMONDS ALUBLASTER

ADVANTAGES

- High tensile carbide tips to resist abrasive wear
- Multi-chip design provides faster cutting rates
- Special set design to avoid clamping

	inch	mm	Teeth per inch			
			2/3	1.4/1.8	1.1/1.4	0.9/1.1
1"x 035		27 x 0.90	■			
1 1/4"x 042		34 x 1.10	■	■		
1 1/2"x 050		41 x 1.30	■	■	■	
2"x 050		54 x 1.30		■		
2"x 062		54 x 1.60		■		
2 5/8"x 062		67 x 1.60			■	
3 1/8"x 062		80 x 1.60				■
Dimension	inch		5"- 16"	16"- 24"	24"- 31"	31"- 59"
Dimension	mm		130-400	400-600	600-800	800-1500

BORN TO CUT

CARBIDE BANDSAW BLADE

Breaker



Solid



Solid



Surface hardened



SIMONDS



APPLICATIONS GROUPS

- Induction Hardened Steels
- Surface treated materials
- Coated materials

inch	mm	Teeth per inch	
		3/4	2/3
1"x 035	27 x 0.90	■	
1 1/4"x 042	34 x 1.10	■	■
1 1/2"x 050	41 x 1.30	■	■
Dimension	inch	3"- 8"	5"- 16"
Dimension	mm	80-200	130-400

ADVANTAGES

- Multi Chip geometry provides a easy penetration and optimal cutting force distribution
- Tooth Geometry decreases vibration on induction hardened materials

CARBIDE BANDSAW BLADE

SIMONDS

BORN TO CUT

Buster



Solid



Solid

APPLICATIONS GROUPS

- *Mold Steels*
- *Cr. Mo*
- *High Alloy Steels*



ADVANTAGES

- *Multi-chip design provides less cutting forces and decreases chip loads rates*
- *Gullet design provides a better chip flow*

inch	mm	Teeth per inch		
		3/4	2/3	1.4/1.8
1"x 035	27 x 0.90	■		
1 1/4"x 042	34 x 1.10	■	■	
1 1/2"x 050	41 x 1.30	■	■	■
2"x 050	54 x 1.30	■	■	
2"x 062	54 x 1.60	■	■	
Dimension	inch	3"- 8"	5"- 16"	9"- 24"
Dimension	mm	80-200	130-400	400-600

BORN TO CUT

Simogrit I/C



Solid



Solid



CARBIDE GRIT

SIMONDS®

APPLICATIONS GROUPS

- Nickel Based Alloys
- Exotic Metals
- Tyres
- Mineral Materials
- Industrial Plastics

ADVANTAGES

- Carbide grit provides a homogenous perfect surface finish
- Cuts all materials which could not be penetrated with teeth blades

inch	mm	Teeth per inch	
		I	C
3/4"x 030	20 x 0.80	■	■
1"x 035	25 x 0.90	■	■
1 1/4"x 042	32 x 1.10	■	■

BORN TO CUT

BI-METAL FOR WOOD BANDSAW BLADE

SIMONDS®



PalletBuster

II

Pallets



APPLICATIONS GROUPS

- Wood
- Plastic

SIMONDS PALLET BUSTER

M42

ADVANTAGES

- Robust tooth design for increased shock resistance
- Flexible backer

inch	mm	Teeth per inch
		5/8 4/6
1 1/4"x 042	34 x 1.10	■
2"x 050	54 x 1.30	■

BORN TO CUT

RS PRO



Solid



Solid

BI-METAL FOR WOOD BANDSAW BLADE

SIMONDS



APPLICATIONS GROUPS

- Wood
- Plastic

M42

inch	mm	Teeth per inch				
		2	1	1.14	1.1/1.4	1.25
1"x 035	27 x 0.90	■				
1 1/4"x 042	34 x 1.10		■	■		■
1 1/2"x 050	41 x 1.30					■
2"x 063	54 x 1.60		■		■	■

ADVANTAGES

- Primary woodcutting applications
- Portable sawmills
- Specialize woodcutting (dimensional wood)
- Wood molding industry

BREAK - IN PROCEDURE

SIMONDS

BASIC PROCEDURE

1. Set band speed to the normal recommended speed per minute for the material.
2. Reduce feed by 50% of the normal cutting rate.
3. Determine the recommended square inches of material to be cut at break-in from table below.
4. Gradually increase the feed rate to normal over total break-in period.

Caution: During the break-in period, it is very important that the band always produce chips. Increase the feed if needed to produce chips or reduce noise/vibration.

<i>Recommended band speed (ft/min)</i>	300	250	200	150	100	50
<i>Square inch to cut for break-in (in/min)</i>	90	75	60	40	25	10
<i>Recommended band speed (m/min)</i>	90	75	60	45	30	15
<i>Square mm to cut for break-in (mm/min)</i>	2300	1900	1500	1000	650	250

ADVANTAGES

- Reduces Vibration
- Reduces Noise Level
- Guarantees a Straight Cut
- Increases Blade Life

SUPPORT

SIMONDS®

**EXCELLENCE DOESN'T STOP WITH
OUR BANDSAW BLADES.**



OUR SUPPORT IS JUST AS SHARP.

WE'RE ONLY ONE SCAN AWAY.

FOLLOW US FOR MORE



BORN TO CUT



www.simonds-saw.com